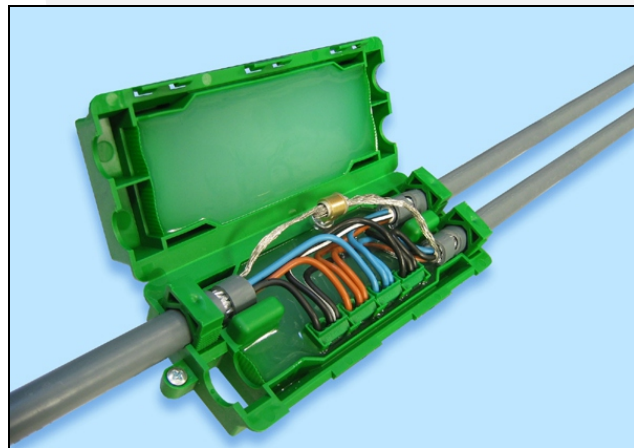
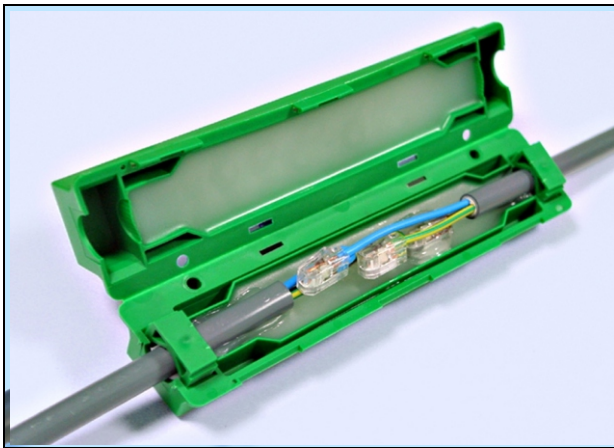


SMART-JOINT connection joint
SMART-JOINT (double) branch-off joint

Art.nr. 290000
Art.nr. 290100



Description

The Smart-Joint is a cable joint which is pre-filled with an insulating and waterproof filling mass, and is suitable for cable diameters up to 15.7mm² (0,62 inch); 4 x 2.5 mm²

The Smart-Joint can be used inside and outside as well as underground.

Features

- Quick and easy installation
- Ready to use; the Smart-Joint is being supplied “pre-filled” with the insulating filling mass
- (double) branch-off joint provided with 4 pre-installed connectors and one earth connector
- Fully sealed for water penetration
- Environmental friendly
- No shelf-life
- Provided with cable clamps
- Provided with 2 holes for easy fixation
- Excellent for use with twin & earth applications.

Technical specifications

Cable diameter ?	: 5 mm – 15.7 mm Solid Copper Cores
Cable capacity - Straight	: max 2 x 2.5 mm ²
Cable capacity – Branch	: max 4 x 2.5 mm ²
Temperature resistance	: - 25 °C - +70 °C
Dimensions – Straight	: 190 mm x 45mm x 34 mm
Dimensions - Branch	: 170 mm x 73 mm x 37 mm
(branch-off joint only)	: 400 V - 24 A / 2,5 mm ²
IP-value	: IP 68 in accordance with EN 60529: 1989 + A1: 1999
Approval	: CE-approval



Subject to change without notice

Version July 2010